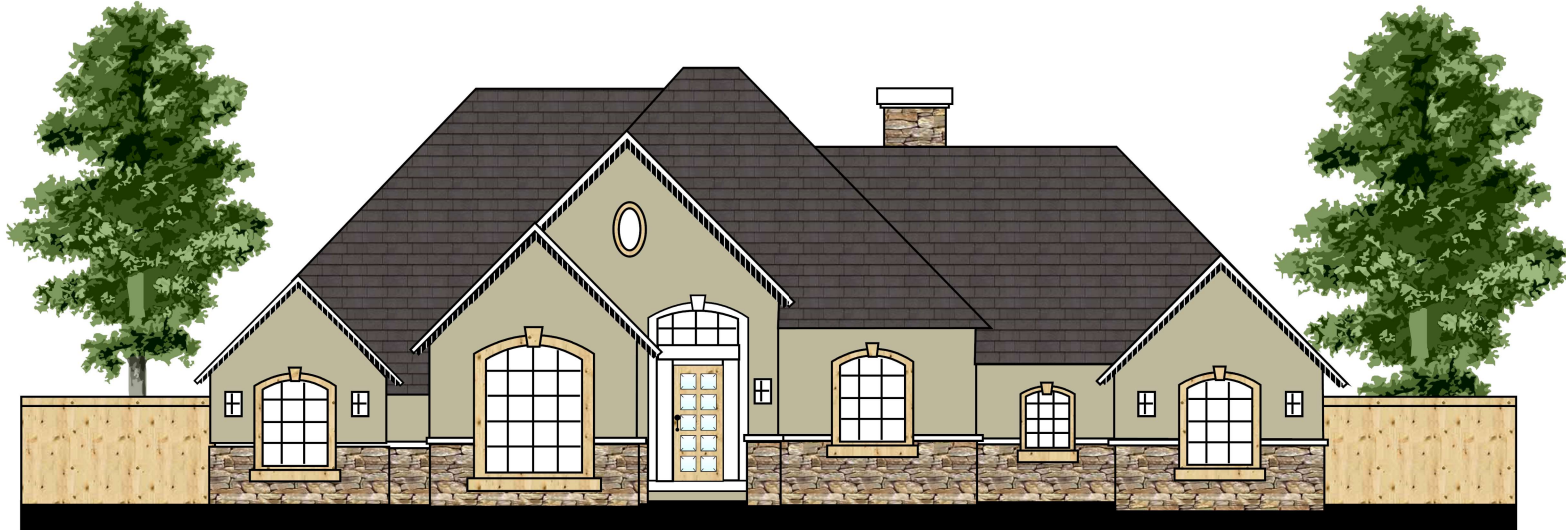




CENTURY HOME INSPECTIONS

## Home Inspection Checklist



### STRUCTURE - MAN-MADE CONSTRUCTION FEATURES

- FOUNDATION WALLS / SLAB
- CRACKS / WATERPROOFING
- BEAMS / COLUMNS
- FRAMING / WALLS / FLOORS
- RAFTERS / TRUSSES
- ROOF CONDITION / ROOF PENETRATIONS
- FLASHINGS / CAULKING
- EXTERIOR VENTS / WALL PENETRATIONS
- GUTTERS / DOWNSPOUTS
- SOFFIT / FASCIA
- EXTERIOR GRADING / DRAINAGE
- CHIMNEYS / FIREPLACES
- WINDOWS / DOORS
- PAINT / CAULK
- CRAWL SPACE
- SIDING / FASCIA / STUCCO
- EXTERIOR DECK CONSTRUCTION
- DETACHED GARAGES / UTILITY SHEDS
- FENCES / RETAINING WALLS
- GROWTH OF VEGETATION

### MECHANICAL / ELECTRIC / PLUMBING - SYSTEMS THAT ARE IN OPERATION OR IN USE ON A DAILY BASIS

- FURNACE / AIR HANDLER
- AIR CONDITIONER / HEAT PUMP
- BOILERS / RADIATORS
- HEAT AND AIR CONDITIONING DISTRIBUTION
- EXHAUST FANS
- WATER SUPPLY PIPES
- DRAIN LINES / VENT STACKS
- WATER HEATERS / HUMIDIFIERS
- GAS LINES
- WASHER / DRYER / DRYER VENTS
- TUBS / SHOWERS / TOILETS / BIDETS / SINKS
- FAUCETS / SPIGOTS / SHUTOFF VALUES
- KITCHEN APPLIANCES
- WATER SERVICE AT HOUSE
- WIRING / SERVICE PANEL
- SWITCHES / PLUGS / INSTALLED LIGHTING
- SUMP PUMP

### ENERGY - THE COMPONENTS THAT CREATE ENERGY SAVINGS OR LOSS

- ATTIC INSULATION / ATTIC VENTILATION
- WALL INSULATION
- VAPOR BARRIERS
- WINDOWS / DOORS / STORM WINDOWS
- FIREPLACES / CHIMNEYS

### ENVIRONMENTAL - HAZARDOUS MATERIALS OR DAMAGE CAUSED BY NON MAN-MADE INTERFERENCE

- WATER DAMAGE
- DRY ROT
- SIGNS OF TERMITES / CARPENTER ANTS
- SIGNS OF PEST / RODENT INFESTATION
- SIGNS OF MOLD
- POSSIBILITY OF THE PRESENCE OF LEAD
- POSSIBILITY OF THE PRESENCE OF ASBESTOS

### SAFETY - ANYTHING THAT CAN CAUSE PHYSICAL HARM TO ANY PERSON

- FIRE HAZARDS / FIRE ESCAPES
- ELECTRICAL / WIRING / PLUGS / LIGHTING
- SERVICE PANEL
- ELECTRIC SERVICE DROP
- EMERGENCY SHUTOFF / GFCI PROTECTION
- GAS VENTING / GAS LEAKING
- DRYER VENTS
- GARAGE DOORS / FIRE DOORS
- SMOKE DETECTORS / CO2 DETECTORS
- STAIRS / RAILINGS
- PORCHES / DECKS / BALCONIES
- DRIVEWAYS AND EXTERIOR WALKWAYS
- POOLS AND SPAS

### ADDITIONAL SERVICES - WE PROVIDE RADON TESTING AT A NOMINAL CHARGE

443-832-5887 or [century.inspections@gmail.com](mailto:century.inspections@gmail.com)

LICENSED AND INSURED